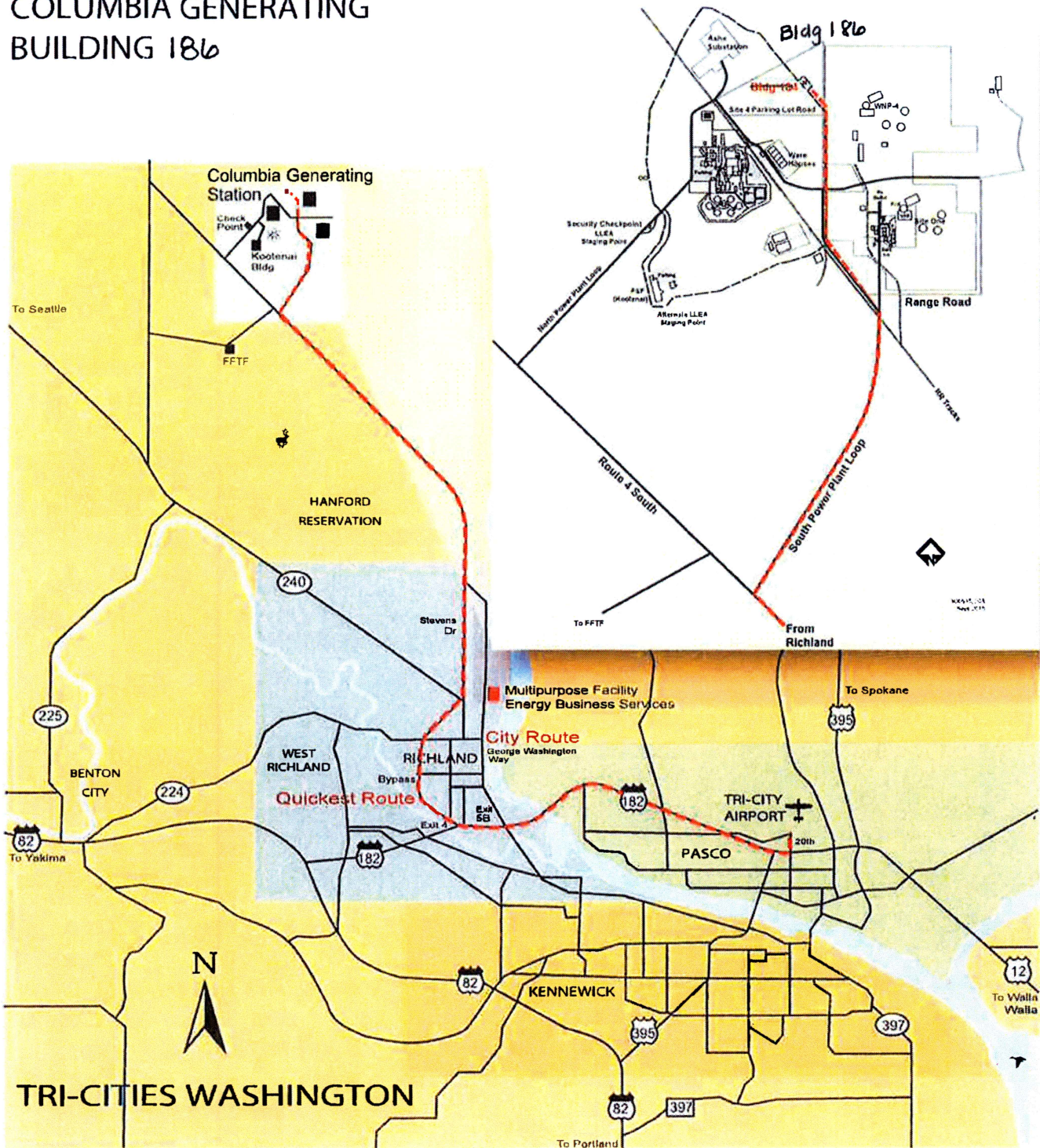
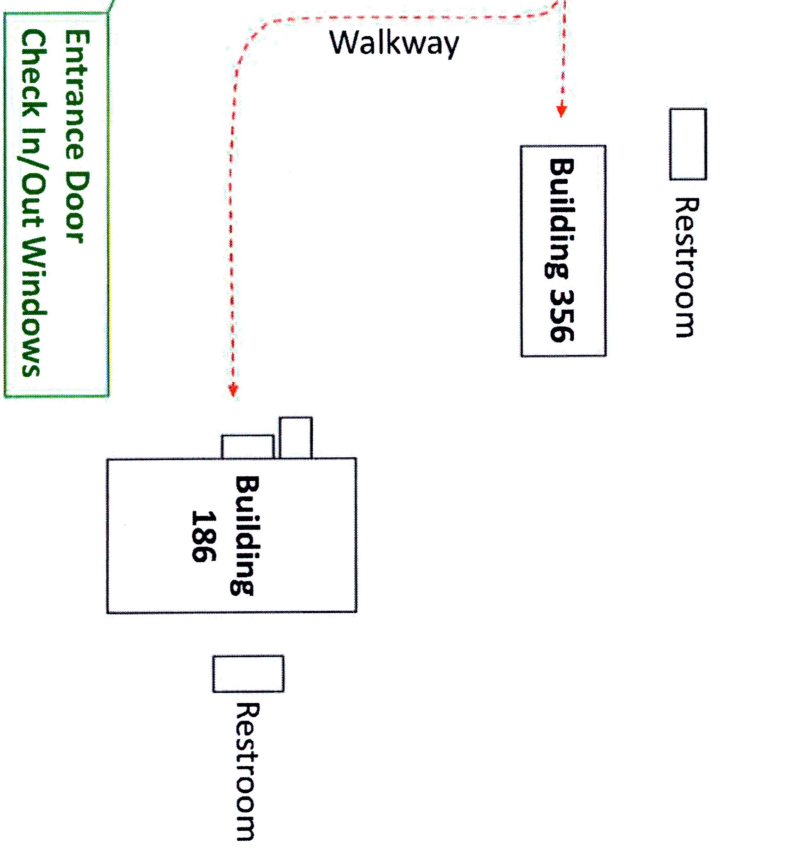
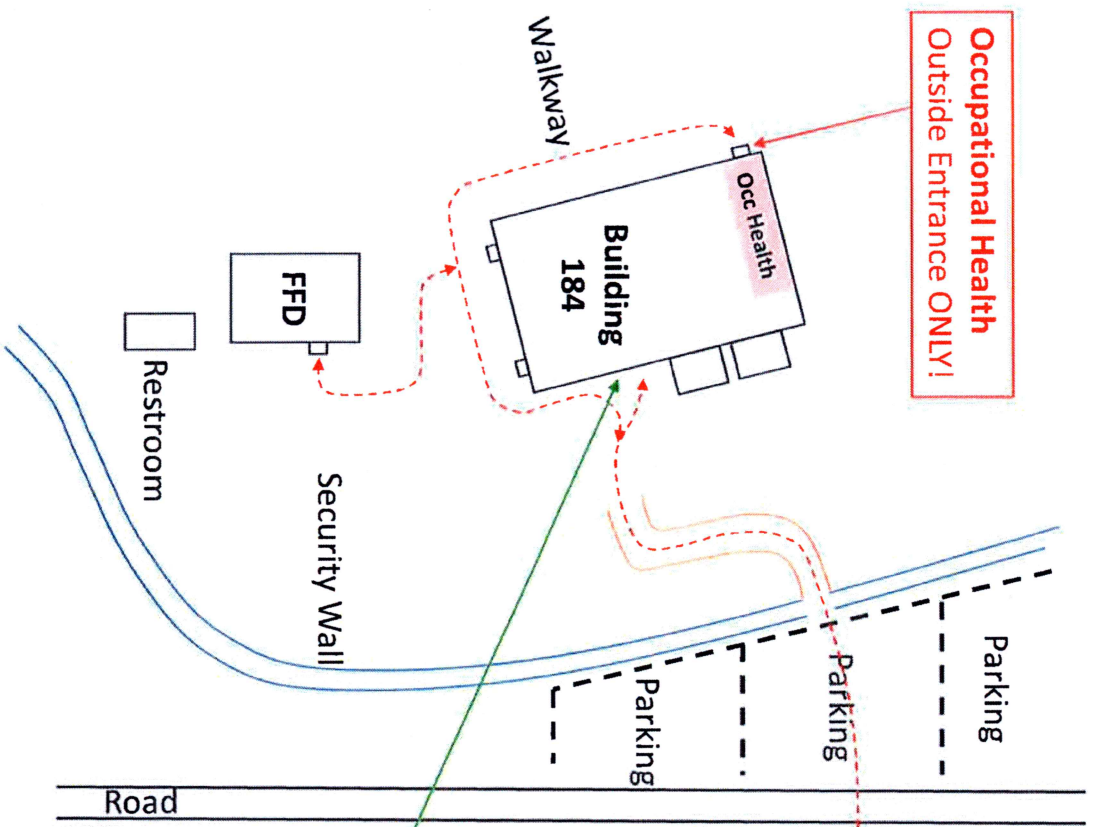


ROUTE FROM AIRPORT TO COLUMBIA GENERATING BUILDING 184



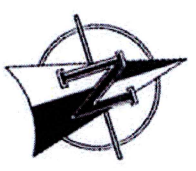
DIRECTIONS FROM PASCO AIRPORT

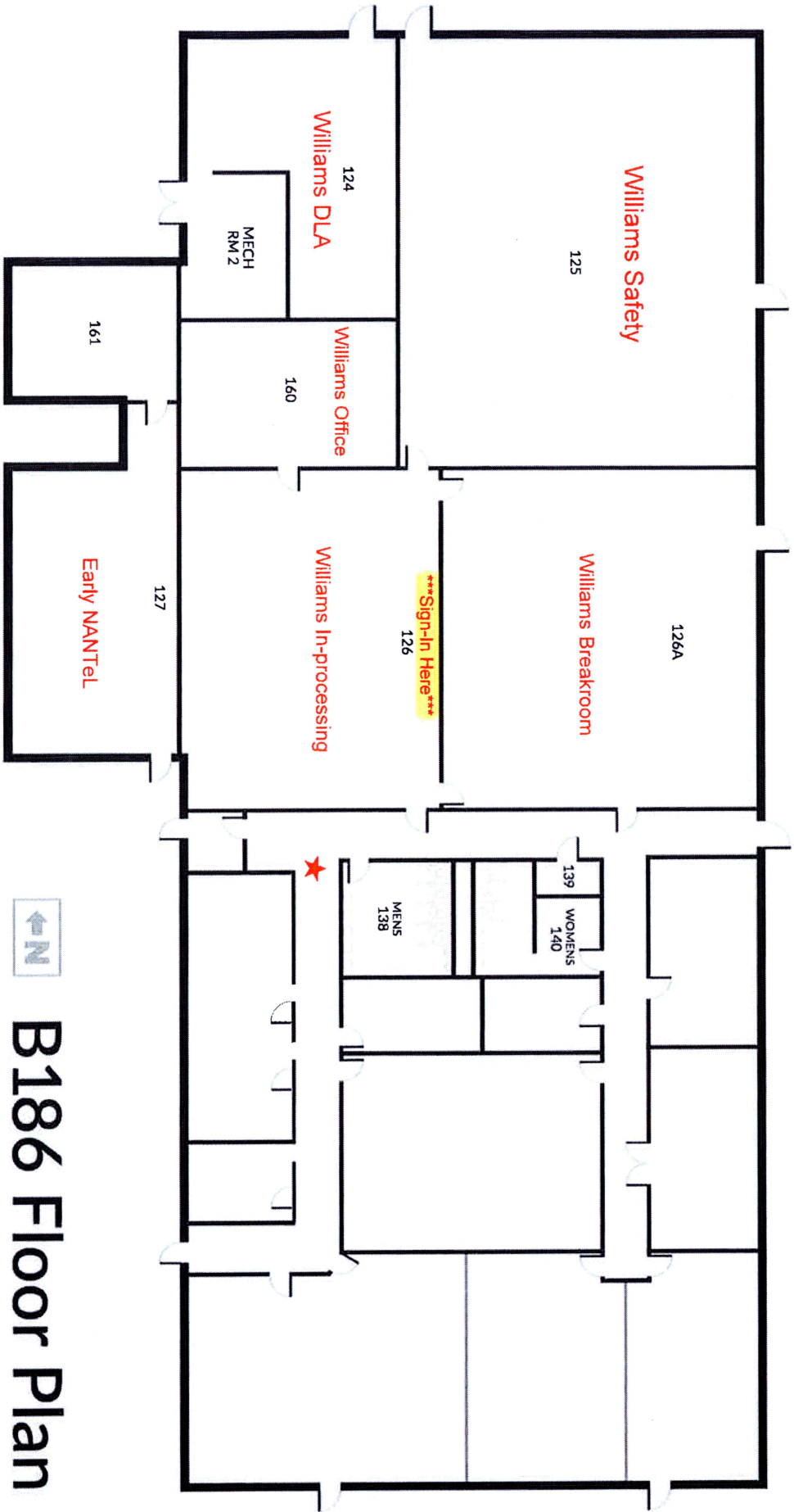
Take I-182 west toward Richland to Exit 4. Head north bypassing Richland and traveling through the Hanford Reservation. Exit at the Energy Northwest Industrial Development Complex sign. Follow the road until it crosses the railroad tracks. The miles from the Tri-Cities Airport to Columbia Generating Station Building 184 is approximately 28 miles.



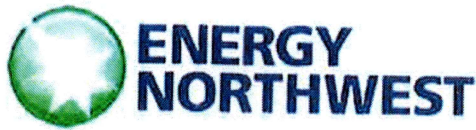
Entrance Door
Check In/Out Windows

IN-PROCESSING BUILDINGS





B186 Floor Plan



Thank you.

Your visitor information has been received.

As the requester, you have a responsibility to ensure that your visitor understands the rules on prohibited articles at Energy Northwest.

Energy Northwest corporate and most other facilities are located in the vicinity of the Columbia Generating Station nuclear power plant.

This is a high-security area.

The following items are prohibited:

*Please check your vehicle
BEFORE arriving at the site.*

- Explosives
- Incendiary devices
- Firearms and ammunition – *This includes spent ammunition cartridges*
- Alcoholic beverages and Marijuana – *NO empty Beer cans/bottles*
- Illegal drugs and controlled substances without prescription
- Chemical agents and self-defense sprays (such as mace, pepper spray, etc.)
- Tasers or other like self-defense items

Violators are subject to criminal prosecution.

As the requester, you have a responsibility to ensure that your visitor understands Site Evacuation expectations at Energy Northwest.

Visitors at the Columbia Generating Station site are expected to follow these rules:

- Meet with your Energy Northwest badged sponsor as soon as you arrive at Columbia Generating Station.
- While visiting Columbia, you will be inside the Exclusion Area / Owner Controlled Area of a commercial nuclear power plant with the potential for an emergency to be declared that could include a radioactive release. While this is highly unlikely to occur, your safety is important to us, and it is important for you to know how you would be notified and what you should do if such an emergency were to occur.
- In the highly unlikely event of an emergency warranting a site evacuation, you would be notified by siren and / or PA announcement.
- IF you are with your Energy Northwest badged sponsor when you are notified of an emergency by siren and / or PA announcement, your sponsor will guide you to evacuate. Each visitor's Energy Northwest badged sponsor is responsible for the evacuation safety of the visitors in their care while at Columbia.
- IF upon arrival at Columbia, you hear a steady siren prior to meeting up with your sponsor, you should immediately evacuate and proceed off the site to the Energy Northwest Office Complex (ENOC) assembly area at the rear (North) of the building at 3000 George Washington Way, on Port of Benton Boulevard in Richland. Audible PA announcements may provide additional information about a site evacuation while at Columbia.

NOTE to sponsor: Supplemental information (including a map to the ENOC Offsite Assembly Area at 3000 George Washington Way) can be found at this link: [CGS Site Evacuation Map & Information](#)

[Add another](#)